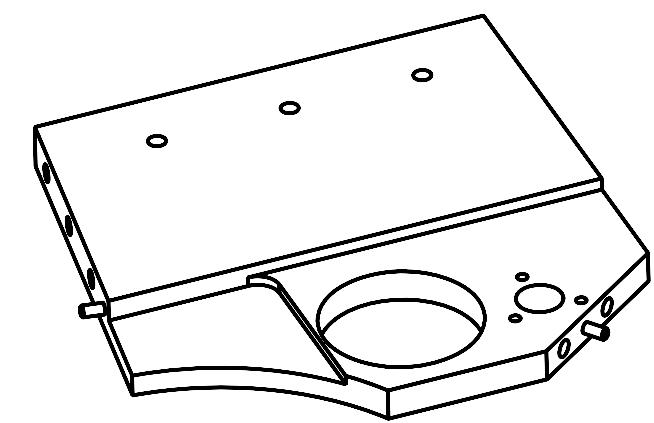
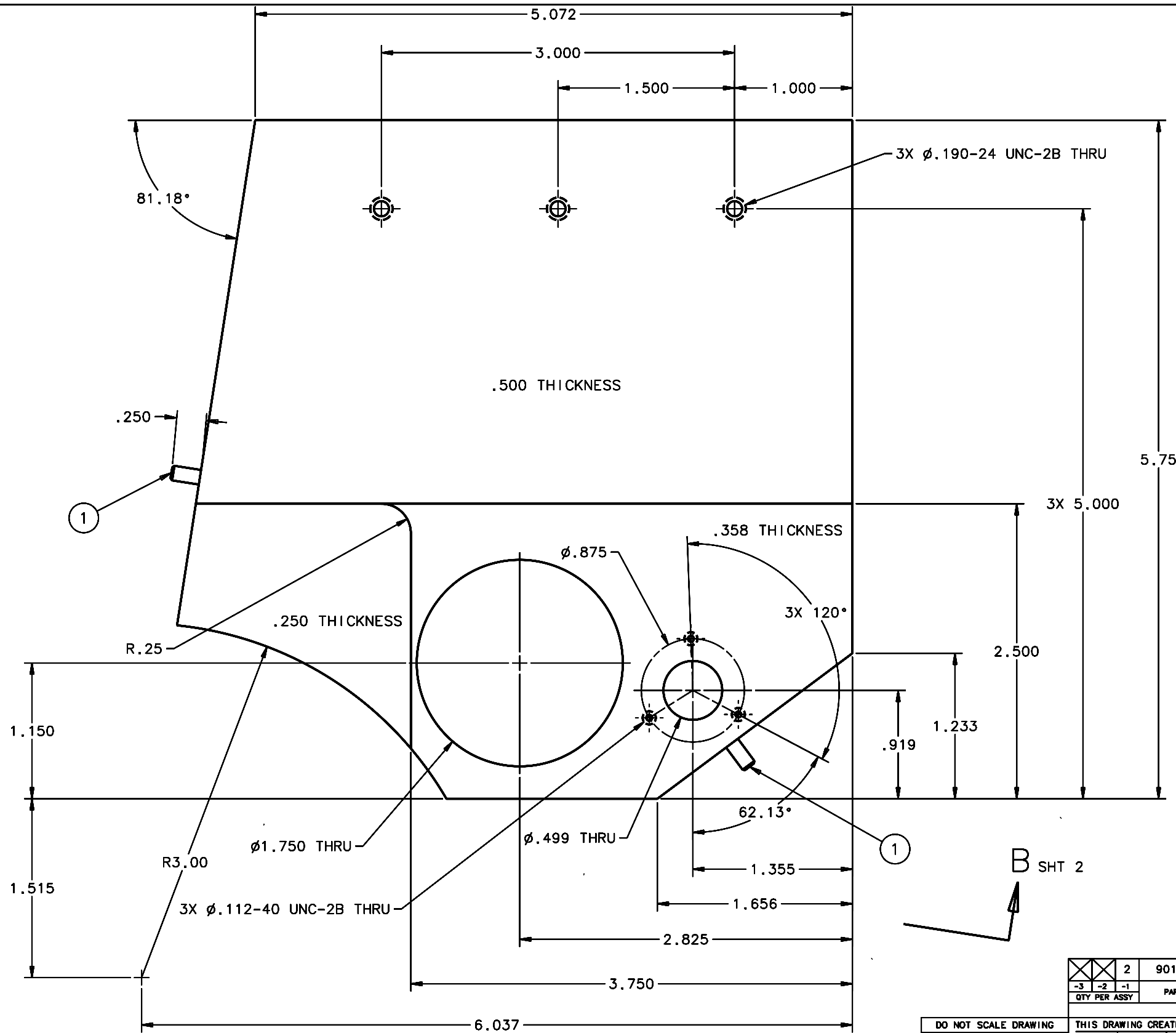


REVISIONS				
LTR	DESCRIPTION	DATE	REVISED BY	APPROVED
A	INITIAL RELEASE	05/03/05	J. BRENNAN	G. LANDIS



- 1 REQUIRED
- NOTES:
- BREAK SHARP EDGES & DEBURR.
 - MACHINED SURFACE FINISH TO BE 125 RMS OR BETTER.
 - MACHINED FILLETS TO BE .015 MAX.
 - ANODIZE PER MIL-A-8625, TYPE II, CLASS 2 - BLACK.
 - ALL DIMENSIONS APPLICABLE PRIOR TO ANODIZING.

SCALE 2:1

2	90145A471	.125 X .500 1808 SS DOWEL PIN	McMASTER CARR	1	
-3	-2	-1	PART NUMBER	PART DESCRIPTION	
LIST OF MATERIALS					
Steward Observatory, University of Arizona 933 N. Cherry Avenue, Tucson, AZ 85721 (520)621-7659					
DESIGNED BY:	D. DEAN	DATE:	12/13/04	CATEGORY:	MMT
DRAWN BY:	R. ABALDO	DATE:	12/13/04	PROJECT:	MAESTRO
CHECKED BY:	G. LANDIS	DATE:	03/21/05	TITLE:	CALIBRATION MOUNTING LOWER PLATE
APPROVED:	M. REED	DATE:	05/03/05	PLOT SIZE SCALE:	D -
APPROVED:	J. BECHTOLD	DATE:	05/03/05	DRAWING NUMBER:	14466
APPROVED:	R. WARNER	DATE:	05/03/05	REVISION:	A
FINISH	4	ASSEMBLY APPLICATION	CURRENT TIME/DATE/FILE LOCATION:	DRAWING ARCHIVE LOCATION: http://dovinc1.es.arizona.edu/ocod/default.html	