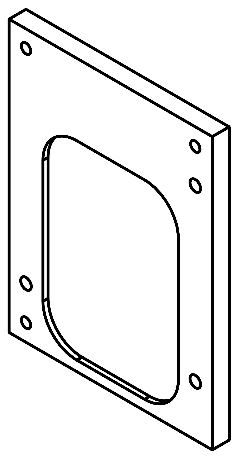
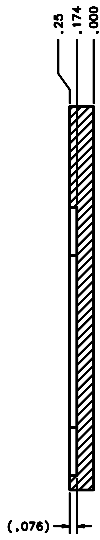
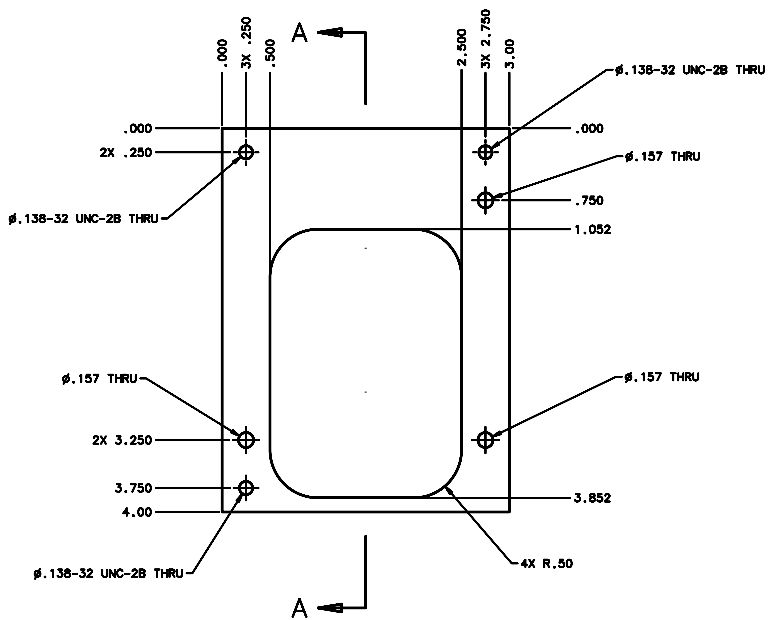


REVISIONS				
LTR	DESCRIPTION	DATE	REVIEWED BY	APPROVED
A	INITIAL RELEASE	03/28/04	J. BROWN	S. LANDIS



SCALE 2:1

- NOTES:
- BREAK SHARP EDGES & DEBURR.
 - MACHINED SURFACE FINISH TO BE 125 RMS OR BETTER.
 - MACHINED FILLETS TO BE .015 MAX.
 - ANODIZE PER MIL-A-8625, TYPE II, CLASS 2 - BLACK.
 - ALL DIMENSIONS APPLICABLE BEFORE ANODIZING.

DO NOT SCALE DRAWING		THIS DRAWING CREATED IN:		Steward Observatory, University of Arizona	
TOLERANCES UNLESS OTHERWISE SPECIFIED ARE IN ACCORDANCE WITH ASME Y14.5M-94		ASAP	ASAP	ASAP	ASAP
TOLERANCES		DATE		PROJECT	
UNLESS OTHERWISE SPECIFIED		12/13/04		MMT	
FRACTIONS		12/13/04		MAESTRO	
DECIMALS		12/13/04		TITLE	
MILS		12/13/04		CALIBRATION DIAGONAL MIRROR MOUNT PLATE	
MATERIAL		DRAWN BY		APPROVED	
AL ALLOY 6061-T6		D. DEAN		S. LANDIS	
FINISH		CHECKED BY		DATE	
4		M. NEED		12/13/04	
NEXT ASSY USED ON		APPROVED		PLAT BY DR BORG	
14451		MNT-MAESTRO		DRAWING NUMBER	
ASSEMBLY APPLICATION		14464		REVISION	
COMPLY WITH DRAWING LOCATION		A		1	
STANDARD ASSY USE LOCATIONS BY (See Note 1) and (See Note 2) and (See Note 3)				SHEET 1 OF 1	