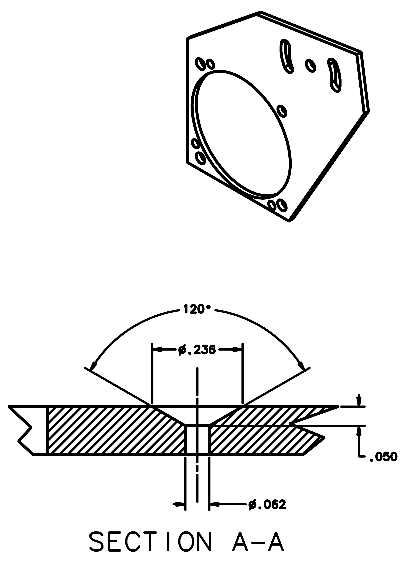
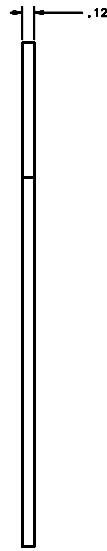
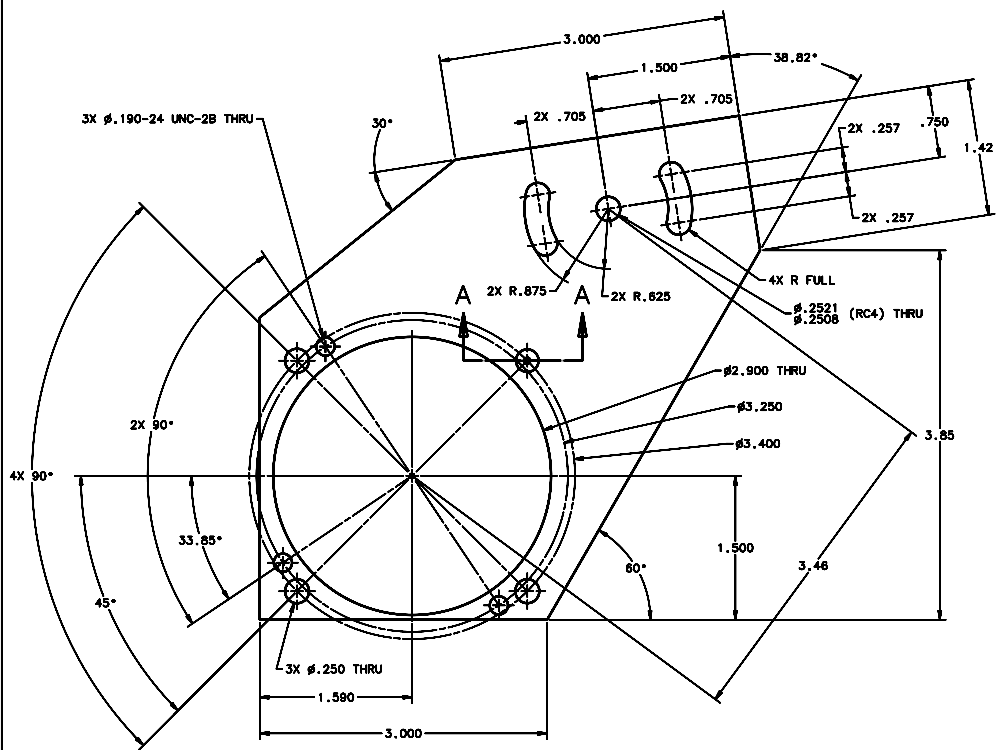


REVISIONS				
LTR	DESCRIPTION	DATE	REVIEWED BY	APPROVED
1	PRE-RELEASED	12/13/04	G. LANDIS	G. LANDIS
2	ADD DIMENSIONS	01/17/05	J. DEAN	G. LANDIS



SCALE 2:1

- NOTES:
1. BREAK SHARP EDGES & DEBURR.
 2. MACHINED SURFACE FINISH TO BE 125 RMS OR BETTER.
 3. MACHINED FILLETS TO BE .015 MAX.
 - 4 ANODIZE PER MIL-A-8625, TYPE II, CLASS 2 - BLACK.
 5. ALL DIMENSIONS APPLICABLE BEFORE ANODIZING.

DO NOT SCALE DRAWING		THIS DRAWING CREATED IN:		Steward Observatory, University of Arizona	
TOLERANCES UNLESS OTHERWISE SPECIFIED		ASAP		933 N. Cherry Avenue, Tucson, AZ 85721 (520) 621-7850	
WITH DECIMALS IN ACCORDANCE WITH ASME Y14.5M-94		MILL		PROJECT: MMT	
TOLERANCES		DRAWN BY: D. DEAN		DATE: 12/13/04	
UNLESS OTHERWISE SPECIFIED		CHECKED BY: G. ABALDO		DATE: 12/13/04	
FRACTIONS		DESIGNED BY: G. LANDIS		DATE: 12/13/04	
DECIMALS		APPROVED BY: M. NEED		DATE: 12/13/04	
FRACTIONS		MATERIAL: AL ALLOY 6061-T6		PART OR BOM CODE: D -	
FRACTIONS		NEXT ASSY USED ON: 14451		DRAWING NUMBER: 14462	
FRACTIONS		FINISH: 4		REVISION: 2	
FRACTIONS		ASSEMBLY APPLICATION:		CHECK THE PART/TITLE LOCATION	
FRACTIONS		COPYRIGHT © 2004 STURDANT		SHEET 1 OF 1	