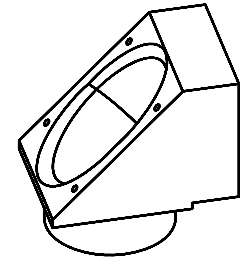
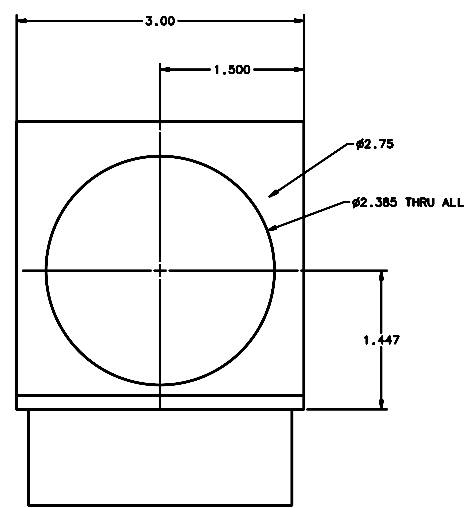
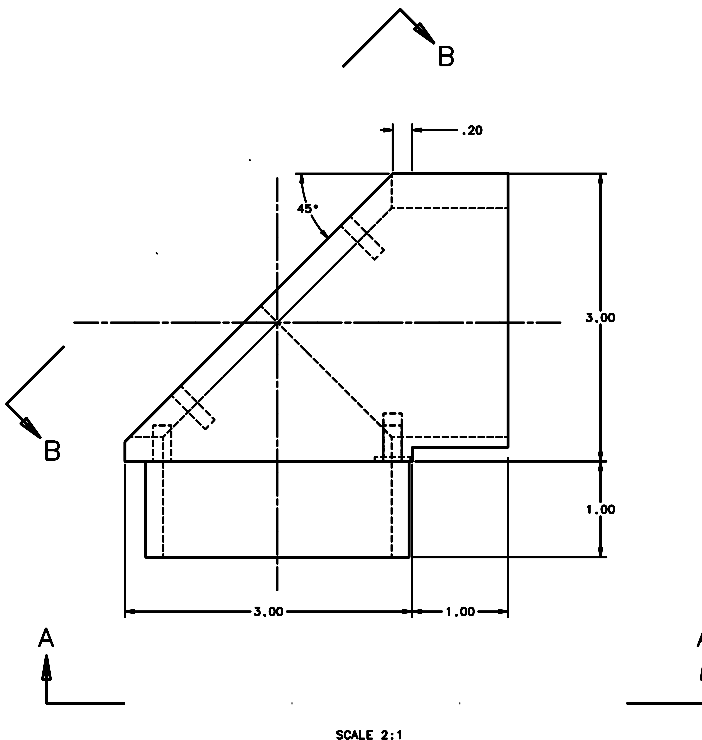


REVISIONS				
LTR	DESCRIPTION	DATE	REVIEWED BY	APPROVED
A	INITIAL RELEASE	03/28/04	J. BROWN	S. LANDIS



SCALE 2:1

- NOTES:
1. BREAK SHARP EDGES & DEBURR.
  2. MACHINED SURFACE FINISH TO BE 125 RMS OR BETTER.
  3. MACHINED FILLETS TO BE .015 MAX.
  4. ANODIZE PER MIL-A-8625, TYPE II, CLASS 2 - BLACK.
  5. ALL DIMENSIONS APPLICABLE BEFORE ANODIZING.

DO NOT SCALE DRAWING		THIS DRAWING CREATED IN:		Steward Observatory, University of Arizona	
TOLERANCES UNLESS OTHERWISE SPECIFIED		<input type="checkbox"/> FRACTION <input type="checkbox"/> DECIMAL <input checked="" type="checkbox"/> TOLERANCE		633 N. Cherry Avenue, Tucson, AZ 85721 (520)621-7850	
TOLERANCES		DRAWN BY: D. DEAN    DATE: 12/13/04    PROJECT: MMT		CHECKED BY: S. LANDIS    DATE: 12/13/04    TITLE: CALIBRATION DIAGONAL MIRROR BOX	
UNLESS OTHERWISE SPECIFIED FRACTIONAL    DECIMAL    TOLERANCE .125    .005    .005 .005    .001    .001 .001    .0005    .0005		APPROVED BY: M. NEED    DATE: 12/13/04		DRAWING NUMBER: 14459    REVISION: A	
MATERIAL: AL ALLOY 6061-T6		14451 MMT-MAESTRO		PLOT BY: J. BROWN    DRAWING NUMBER: 14459    REVISION: A	
FINISH: 4		NEXT ASSY USED ON:		COMPANY TITLE: STeward OBSERVATORY ADDRESS: 633 N. CHERRY AVENUE, TUCSON, AZ 85721	
ASSEMBLY APPLICATION:		COMPANY TITLE: STeward OBSERVATORY		SHEET 1 OF 2	