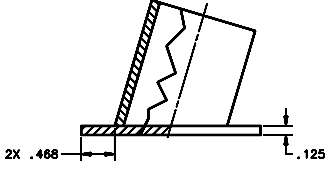
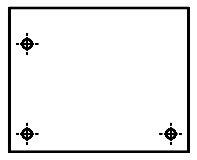
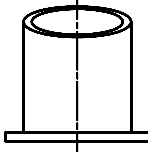
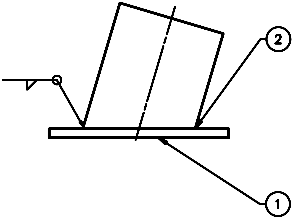
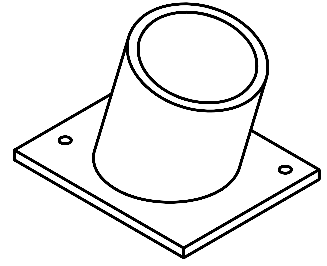
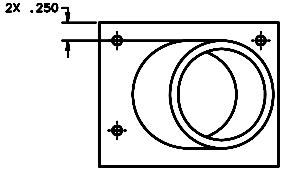


REVISIONS				
LTR	DESCRIPTION	DATE	REVISED BY	APPROVED
A	INITIAL RELEASE	03/25/04	J. DEAN	G. LANDIS
B	ISSUE #1, 1000 REV. HOLE FROM MOUNTING PLATE FOR ANODIZING GAGE	03/25/04	J. DEAN	G. LANDIS



- NOTES:
1. BREAK SHARP EDGES & DEBURR.
 2. MACHINED SURFACE FINISH TO BE 125 RMS OR BETTER.
 3. MACHINED FILLETS TO BE .015 MAX.
 4. ANODIZE PER MIL-A-8625, TYPE II, CLASS 2 - BLACK.
 5. ALL DIMENSIONS APPLICABLE PRIOR TO ANODIZING.

QTY	DESCRIPTION	UNIT	REVISION
1	14458-7 TUBE SUPPORT	Ø1.3 x .0007 Ø1.3 x .0007 Ø1.3 x .0007	2
1	14458-5 MOUNTING PLATE	-	1

DO NOT SCALE DRAWING INTERPRET DIMENSIONS AND TOLERANCES IN ACCORDANCE WITH THE DIMENSIONAL PRACTICES MANUAL UNLESS OTHERWISE SPECIFIED DIMENSIONS ARE IN INCHES DECIMALS ARE TO 0.0001 FRACTIONS ARE TO 1/16"		THIS DRAWING CREATED IN: <input type="checkbox"/> CAD <input type="checkbox"/> MISC <input checked="" type="checkbox"/> TIGER	
LIST OF MATERIALS Steward Observatory, University of Arizona 933 N. Cherry Avenue, Tucson, AZ 85721 (520)621-7850			
DESIGNED BY:	D. DEAN	DATE:	12/13/04
DESIGNED BY:	G. LANDIS	DATE:	12/13/04
APPROVED BY:	M. NEED	DATE:	12/13/04
MATERIAL AL ALLOY 6061-T6		PART NUMBER 14458	USED ON MMT-MAESTRO
FINISH 4		ASSEMBLY APPLICATION CALIBRATION MOUNT/TUBE INTERSECTION ASSEMBLY	DRAWING NUMBER 14458