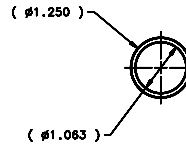
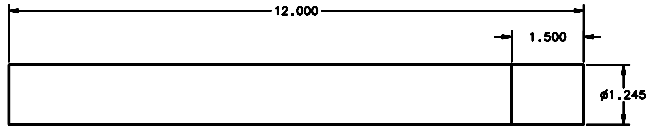
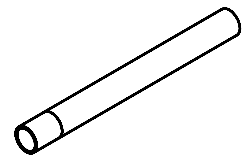


REVISIONS			
LTR	DESCRIPTION	DATE	REVISION BY / APPROVED
A	INITIAL RELEASE	03/28/04	J. BROWN / S. LAMB



SCALE 1:1

NOTES:

1. MAKE FROM ADVANCED COMPOSITES 1.25 TUBE.
2. BREAK SHARP EDGES & DEBURR.
3. MATERIAL: FIBERGLASS CARBON/EPOXY TUBING, 1.250 O.D. x .094 W (1.063 I.D.), ADVANCE COMPOSITES, INC. #TUBE 1.25.

DO NOT SCALE DRAWING		THIS DRAWING CREATED IN:		Steward Observatory, University of Arizona	
TOLERANCES UNLESS OTHERWISE SPECIFIED		ASAP	ASAP	933 N. Cherry Avenue, Tucson, AZ 85721 (520)621-7856	
TOLERANCES IN ACCORDANCE WITH SAE Y14.5M-94		<input type="checkbox"/>	<input type="checkbox"/>	DESIGNED BY: D. DEAN	DATE: 12/13/04
TOLERANCES				PROJECT: MMT	
UNLESS OTHERWISE SPECIFIED				DRAWN BY: G. LAMB	DATE: 12/13/04
LINES: REGULAR				APPROVED BY: M. REED	DATE: 12/13/04
DIMENSIONS: ± .005				TITLE: CALIBRATION MOUNT TUBE	
FINISH: SEE SPEC P-008				PART OR BOM CODE: D -	
MATERIAL: FIBERGLASS CARBON / EPOXY TUBING		14450	MMT-MAESTRO	ORDER NUMBER: 14457	REVISION: A
FINISH		ASSEMBLY APPLICATION		COMPANY TOLERANCE/PLATE LOCATION	
				SHEET 1 OF 1	