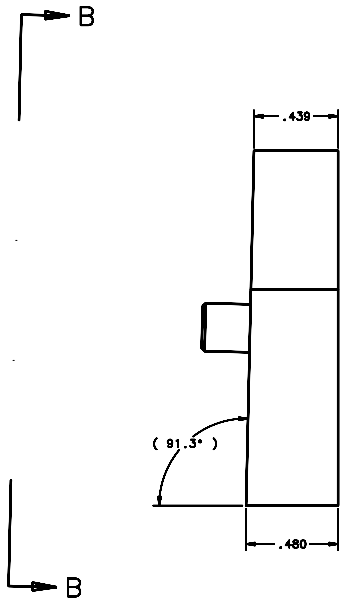
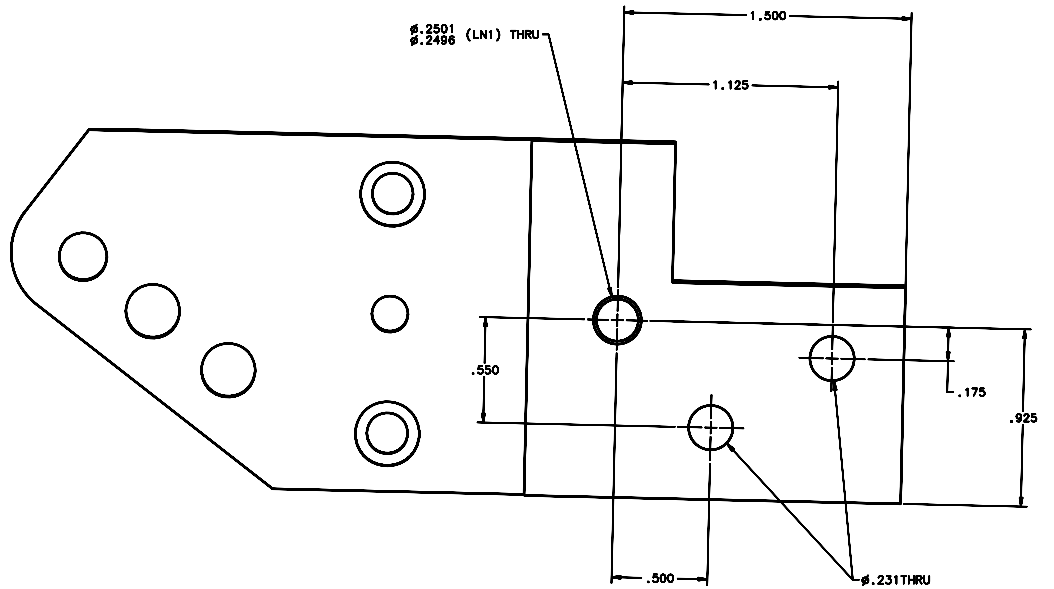


| REVISIONS | | | |
|-----------|-----------------|----------|-----------------------|
| LTR | DESCRIPTION | DATE | REVISED BY / APPROVED |
| A | INITIAL RELEASE | 03/28/04 | J. BROWN / S. LANDIS |



VIEW A-A SH1 1



VIEW B-B
SCALE 4:1

| | | | | | |
|---|--|-----------------------------------|-------------|--|-------|
| DO NOT SCALE DRAWING | | THIS DRAWING CREATED IN: | | Steward Observatory, University of Arizona | |
| TOLERANCES UNLESS OTHERWISE SPECIFIED ARE IN ACCORDANCE WITH ASME Y14.5M-94 | | ASAP | ISO | 933 N. Cherry Avenue, Tucson, AZ 85721 (520)621-7856 | |
| TOLERANCES | | APPROVED BY: | DATE: | PROJECT: MMT | |
| UNLESS OTHERWISE SPECIFIED | | D. DEAN | 12/13/04 | DRAWN BY: | |
| FRACTIONS | | G. ABALDO | 12/13/04 | CHECKED BY: | |
| DECIMALS | | G. LANDIS | 12/13/04 | APPROVED BY: | |
| DIMENSIONS | | M. REED | 12/13/04 | TITLE: | |
| MATERIAL | | NEXT ASSY USED ON | | CALIBRATION END FITTING PLATE R | |
| AL ALLOY 6061-T6 | | 14450 | MMT-MAESTRO | PLAT TO BE BORED | 14456 |
| FINISH | | ASSEMBLY APPLICATION | | REVISION: | A |
| 4 | | COMPANY TOLERANCES/PLATE LOCATION | | SHEET 2 OF 3 | |