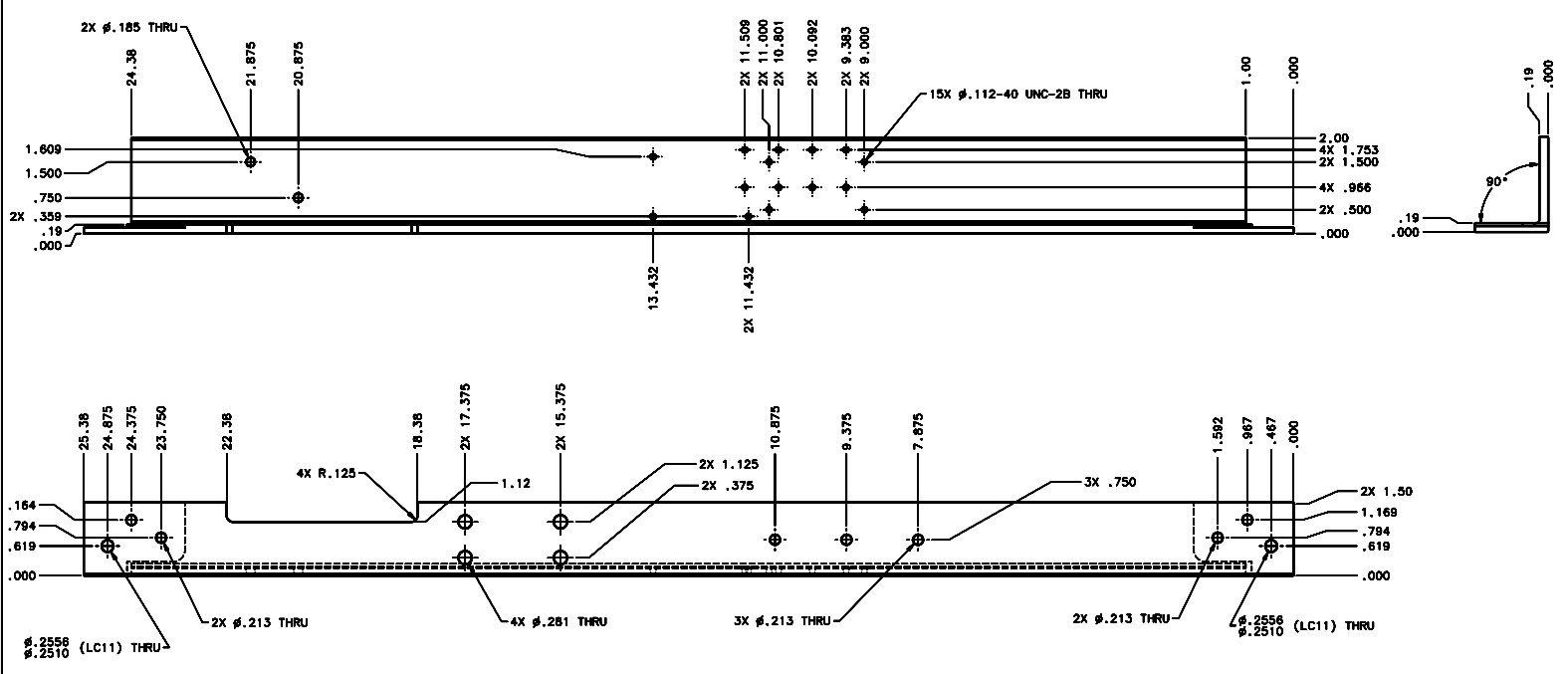


REVISIONS			
LTR	DESCRIPTION	DATE	REVISION BY / APPROVED
A	INITIAL RELEASE	03/28/04	J. DEAN / G. LANDIS



SCALE 1:1

- NOTES:
- BREAK SHARP EDGES & DEBURR.
  - MACHINED SURFACE FINISH TO BE 125 RMS OR BETTER.
  - MACHINED FILLETS TO BE .015 MAX.
  - ANODIZE PER MIL-A-8625, TYPE II, CLASS 2 - BLACK.
  - ALL DIMENSIONS APPLICABLE BEFORE ANODIZING.

DO NOT SCALE DRAWING		THIS DRAWING CREATED IN:		Steward Observatory, University of Arizona	
TOLERANCES UNLESS OTHERWISE SPECIFIED		ASAP	ASAP	833 N. Cherry Avenue, Tucson, AZ 85721 (520)621-7850	
TOLERANCES IN ACCORDANCE WITH ISO 2768-MS		<input type="checkbox"/>	<input type="checkbox"/>	DESIGNED BY: D. DEAN	DATE: 12/13/04
TOLERANCES UNLESS OTHERWISE SPECIFIED		MATERIAL: AL ALLOY 6061-T6		APPROVED BY: G. LANDIS	DATE: 12/13/04
TOLERANCES UNLESS OTHERWISE SPECIFIED		FINISH: 4		PROJECT: MAESTRO	TITLE: CALIBRATION ANGLE BRACKET
TOLERANCES UNLESS OTHERWISE SPECIFIED		NEXT ASSY USED ON: 14450 MMT-MAESTRO		PLAT OR DRG CODE: D -	ORDER NUMBER: 14453
TOLERANCES UNLESS OTHERWISE SPECIFIED		ASSEMBLY APPLICATION:		REVISION: A	SHEET 1 OF 2