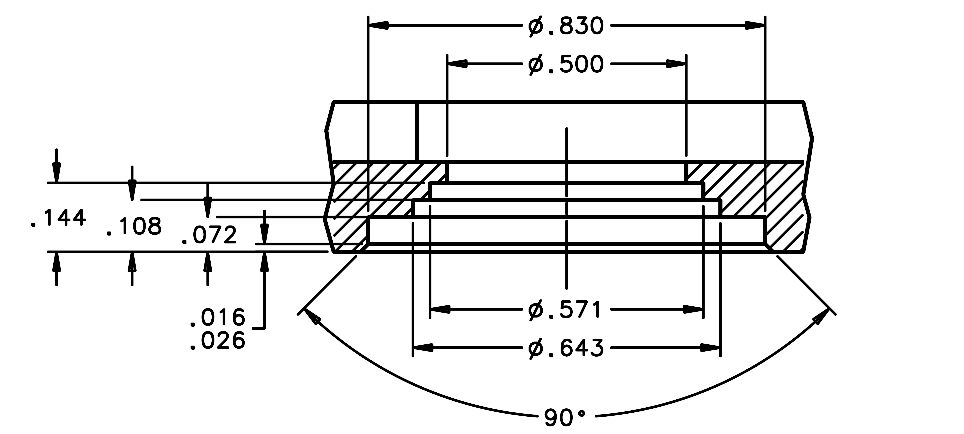
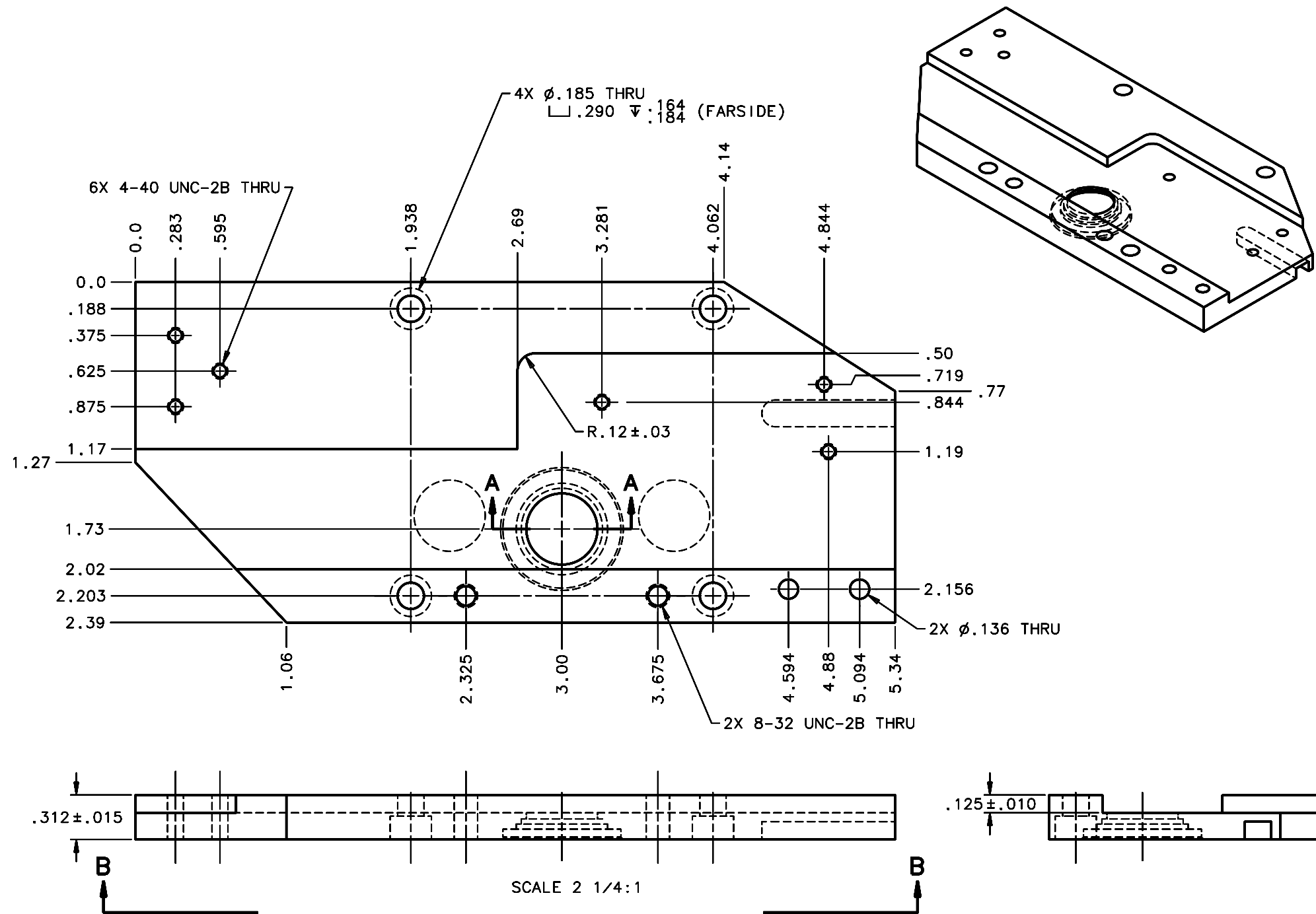
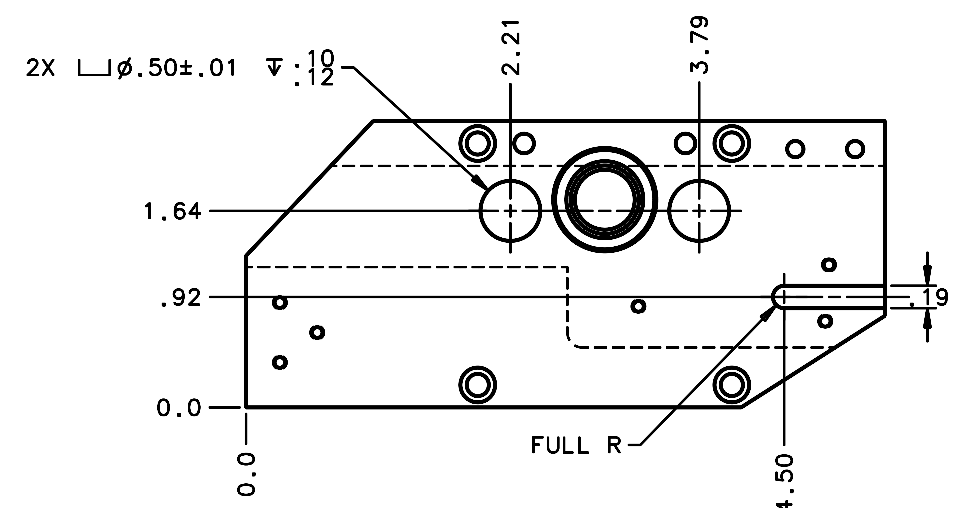


REVISIONS				
LTR	DESCRIPTION	DATE	REVISED BY	APPROVED
A	INITIAL RELEASE	08/29/12	-	MRASCON



SECT A-A

SCALE 5:1
TOLERANCES FOR ALL DIMENSIONS IN THIS VIEW = ±.010



VIEW B-B

SCALE 1:1

- NOTES:
- BREAK SHARP EDGES & DEBURR.
 - MACHINED SURFACE FINISH TO BE 125 RMS OR BETTER.
 - MACHINED FILLETS TO BE R.015 MAX.
 - ANODIZE PER MIL-A-8625, TYPE II, CLASS 2, BLACK; PLUG THREADED HOLES.
 - DIMENSIONS ARE BEFORE ANODIZING.

DO NOT SCALE DRAWING		THIS DRAWING CREATED IN:		Steward Observatory, University of Arizona	
INTERPRET DIMENSIONS AND TOLERANCES IN ACCORDANCE WITH ASME Y14.5M-94		ACAD <input type="checkbox"/>	MECH <input type="checkbox"/>	IDEAS <input checked="" type="checkbox"/>	933 N. Cherry Avenue, Tucson, AZ 85721 (520)621-7659
TOLERANCES UNLESS OTHERWISE SPECIFIED		DESIGNED BY: RNAGY		DATE: 08/27/12	CATEGORY: MMT
LINEAR .XX = ±.02		DRAWN BY: RNAGY		DATE: 08/29/12	PROJECT: MAESTRO
ANGULAR .XXX = ±.005		CHECKED BY: RNAGY/MRASCON		DATE: 08/29/12	TITLE: INJECTION OPTICS SLIT DISK CARRIAGE OPTICS PLATE
DIAMETRICAL SEE SPEC S-002		APPROVED BY: MRASCON		DATE: 08/29/12	
MATERIAL 6061-T6 Al		APPROVED:			
FINISH 4		23001	MAESTRO	APPROVED:	
ASSEMBLY APPLICATION		NEXT ASSY	USED ON	APPROVED:	
CURRENT TIME/DATE/FILE LOCATION: -		DRAWING NUMBER: 22948		PLOT SIZE SCALE: D SEE VIEWS	REVISION: A
DRAWING ARCHIVE LOCATION: http://dovinci.as.arizona.edu/ccad/default.html		DRAWING NUMBER: 22948		SHEET 1 OF 1	