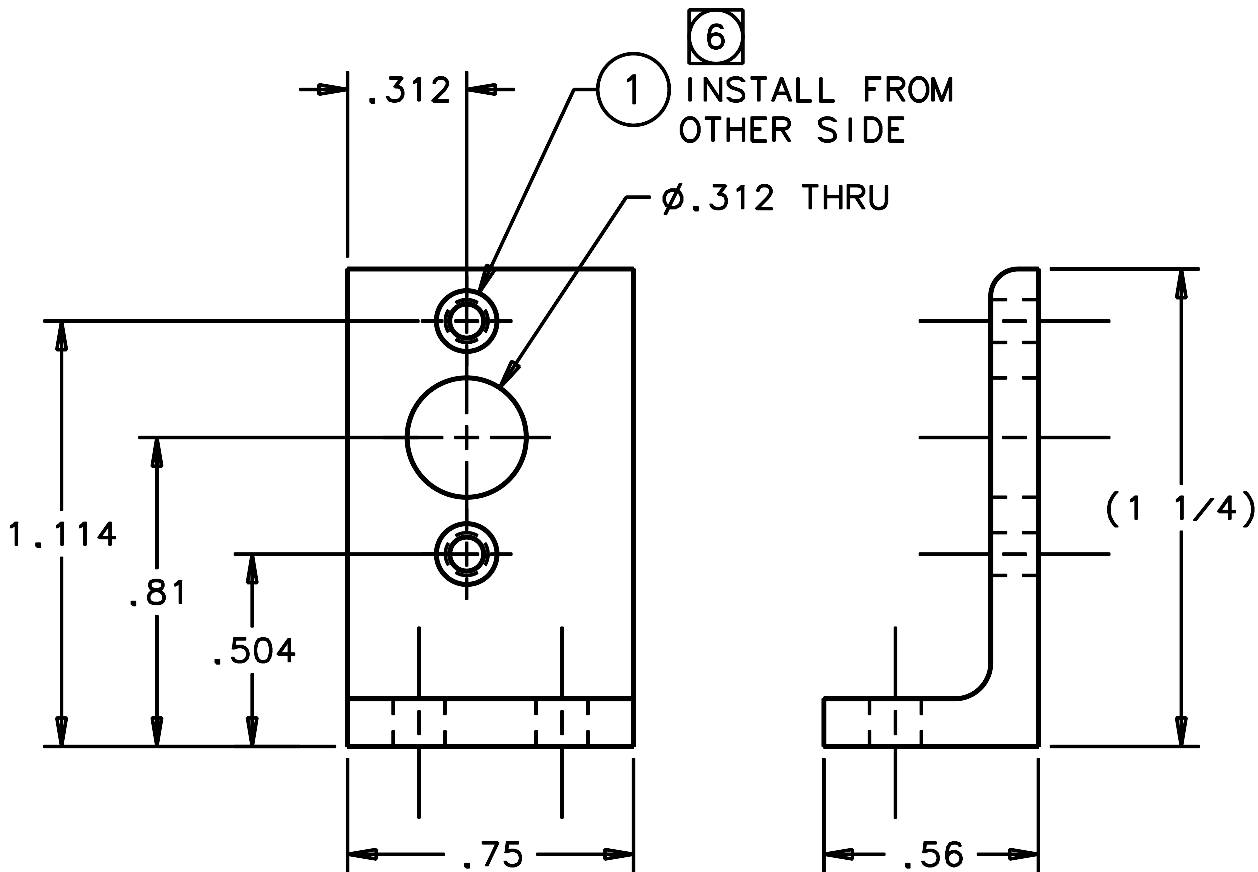
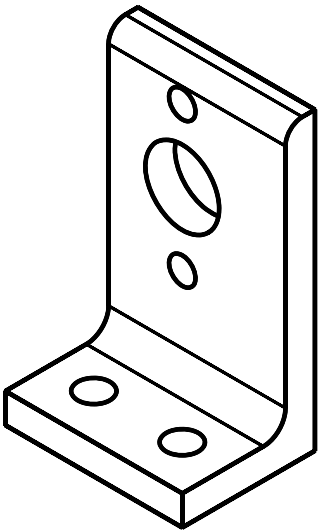
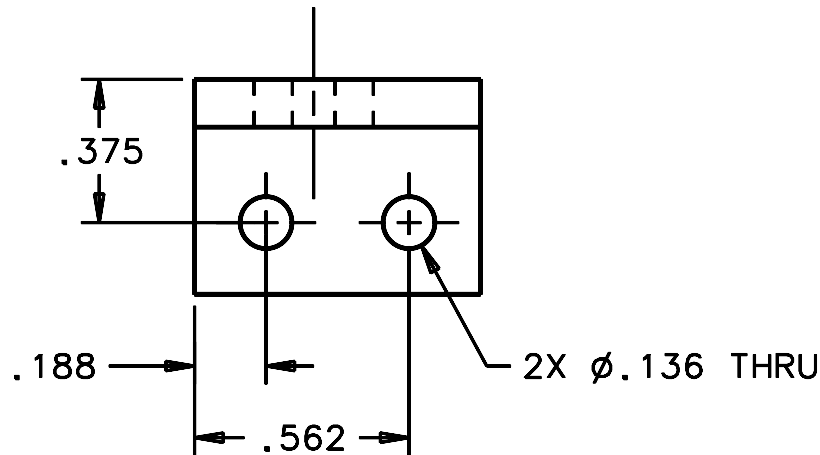


REVISIONS				
LTR	DESCRIPTION	DATE	REVISED BY	APPROVED
A	INITIAL RELEASE	09/17/12	-	MRASCON



SCALE 2:1

#### NOTES:

- 1 MATERIAL: 6061-T6 Al 90° ANGLE, 1 1/4 x 1 1/4 x 1/8. OTHER ANGLE LEG LENGTHS MAY BE USED & CUT TO SIZE.
2. BREAK SHARP EDGES & DEBURR.
3. MACHINED SURFACE FINISH TO BE 125 RMS OR BETTER.
- 4 ANODIZE, EXCEPT FOR INSERTS, PER MIL-A-8625, TYPE II, CLASS 2, BLACK.
5. DIMENSIONS ARE BEFORE ANODIZING.
- 6 INSTALL INSERT PER MANUFACTURER'S DIRECTIONS.
- 7 McMASTER-CARR PART NUMBERS MAY BE USED.

7	2	91732A351	STANDARD HELICAL INSERT, 4-40 x .112 LG	SS	1
-3	-2	-1	PART NUMBER	PART DESCRIPTION	MANUFACTURER or MAT'L SPEC
QTY PER ASSY					ITEM NO.

#### LIST OF MATERIALS

Steward Observatory, University of Arizona  
933 N. Cherry Avenue, Tucson, AZ 85721 (520)621-7659

DESIGNED BY: RNAGY	DATE: 09/13/12	CATEGORY: MMT
DRAWN BY: RNAGY	09/13/12	PROJECT: MAESTRO
CHECKED BY: RNAGY/MRASCON	09/17/12	TITLE: INJECTION OPTICS SLIT DISK CARRIAGE ANTI-BACKLASH NUT MOUNT
APPROVED: MRASCON	09/17/12	
APPROVED:		
APPROVED:		
APPROVED:		
23001	MAESRTO	PLOT SIZE B
NEXT ASSY	USED ON	SCALE: SEE VIEWS
		DRAWING NUMBER: 22941
		REVISION: A

DO NOT SCALE DRAWING  
INTERPRET DIMENSIONS AND TOLERANCES IN ACCORDANCE WITH ASME Y14.5M-94

TOLERANCES  
UNLESS OTHERWISE SPECIFIED  
LINEAR .X = .03  
.XX = .010  
ANGULAR ±1°  
DIAMETRICAL  
SEE SPEC S-002

DIMENSIONS ARE IN INCHES / DIMENSIONS IN ( ) ARE METRIC

MATERIAL  
1 ALSO SEE LIST OF MATL

FINISH 4

THIS DRAWING CREATED IN:  
ACAD ☐ MECH ☐ IDEAS ☒  
23001 MAESRTO  
NEXT ASSY USED ON

ASSEMBLY APPLICATION

CURRENT TIME/DATE/FILE LOCATION: -  
DRAWING ARCHIVE LOCATION: <http://dewinci.cs.arizona.edu/ecad/default.html>