

Constellation: **None**

Star Name: **Sun**

Brightness (Magnitude): -26.73

Distance: 8.3 light-minutes

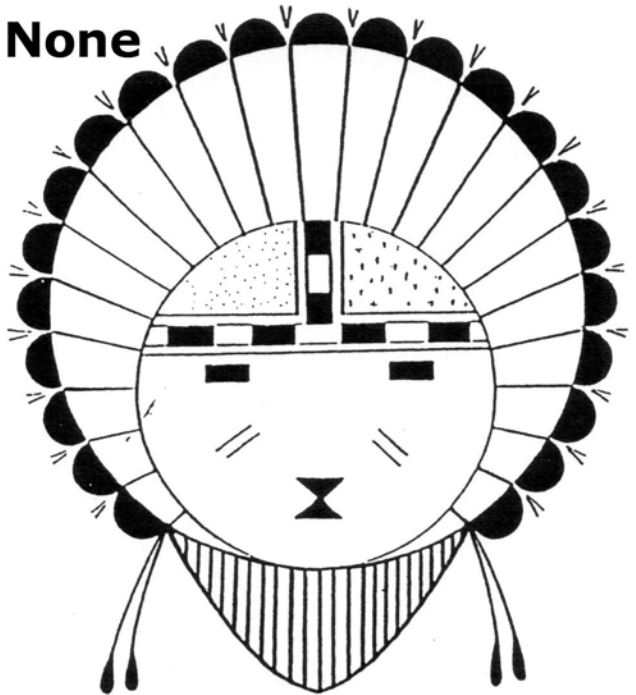
Absolute Magnitude: 4.8

Temperature: 5,780 K

Color: Yellow

Type: Main Sequence (Dwarf)

Spectral Class: G2 V



Constellation: **Canis Minor (The Lesser Dog)**

Star Name: **Procyon**

Brightness (Magnitude): 0.34

Distance: 11.4 light-years

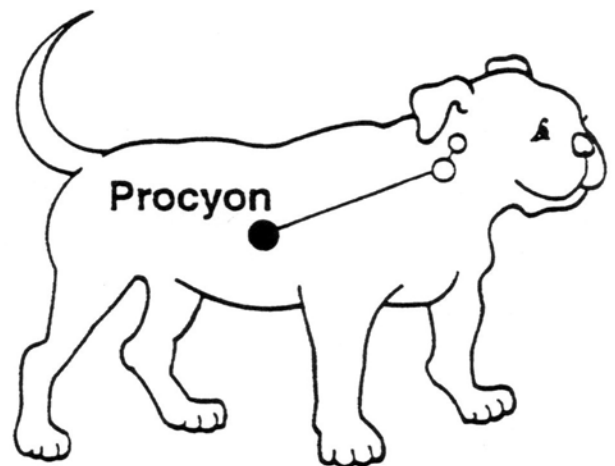
Absolute Magnitude: 2.6

Temperature: 6,650 K

Color: Yellow-White

Type (Size): Subgiant

Spectral Class: F5 IV-V



Constellation: **Auriga (The Charioteer)**

Star Name: **Capella**

Brightness (Magnitude): 0.08
(0.91/0.76) (Binary star)

Distance: 42 light-years

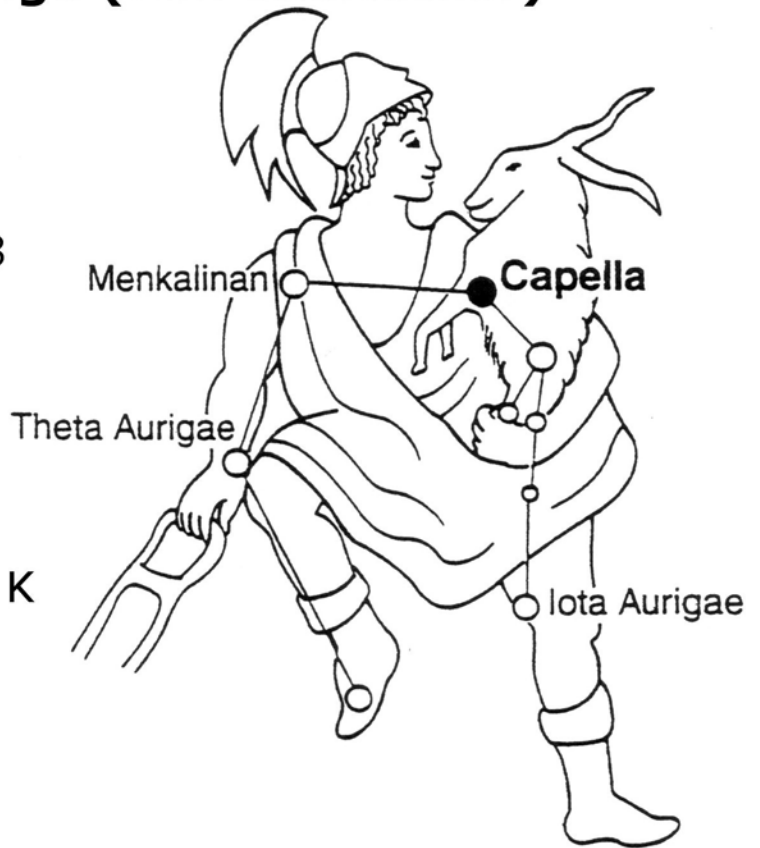
Absolute Magnitude: -0.5
(0.4/0.2)

Temperature: 4,950 K/5,700 K

Color: Yellow-Orange/Yellow

Type (Size): Giant/Giant

Spectral Class: G8 III/G1 III



Constellation: **Auriga (The Charioteer)**

Star Name: **Menkalinan**

Brightness (Magnitude): 1.90
(Binary star)

Distance: 82 light-years

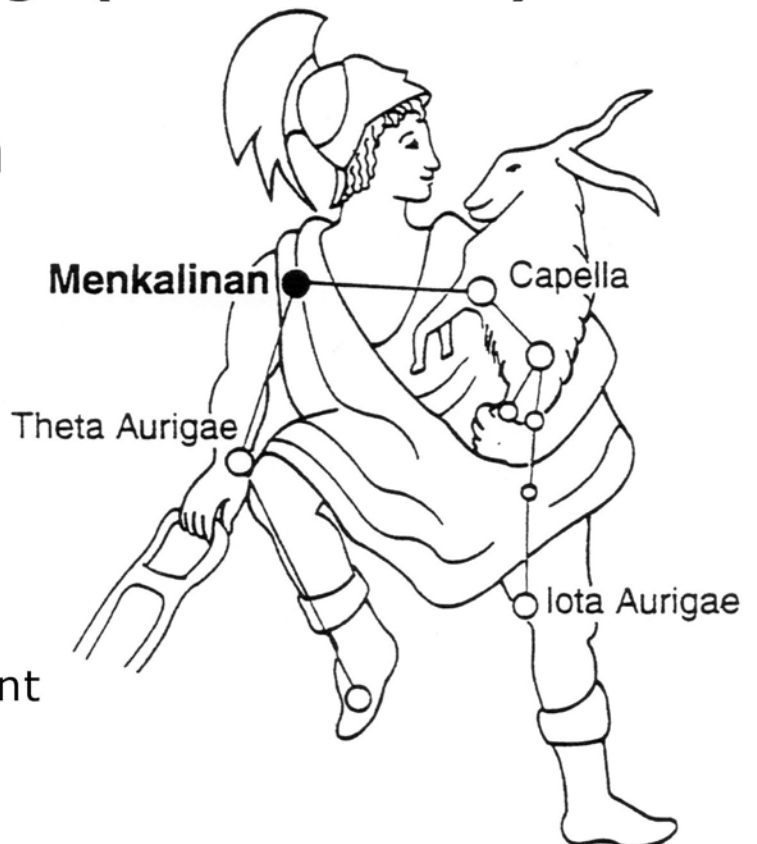
Absolute Magnitude: -0.1

Temperature: 8,800 K

Color: White/White

Type (Size): Subgiant/Subgiant

Spectral Class: A2 IV/A2 IV



Constellation: **Canis Major (The Greater Dog)**

Star Name: **Aludra**

Brightness (Magnitude): 2.45

Distance: 3,000 light-years

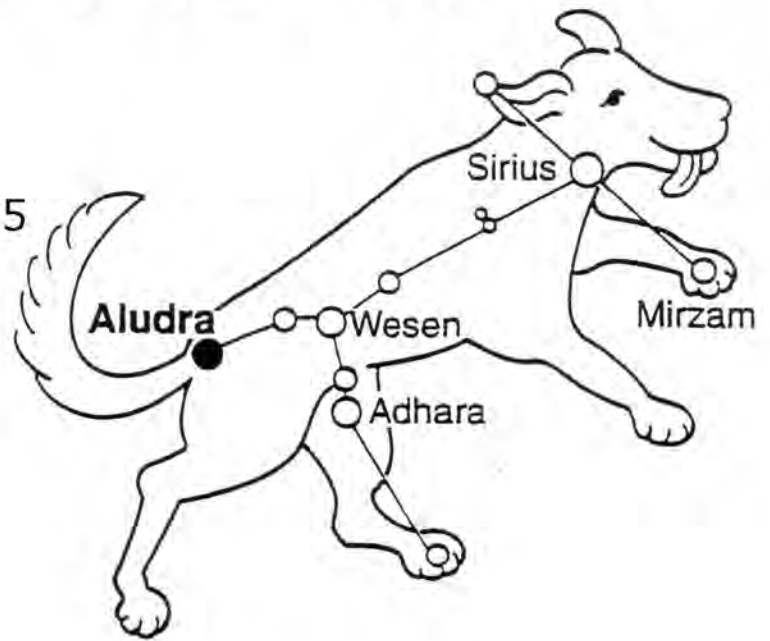
Absolute Magnitude: -7.5

Temperature: 18,000 K

Color: Blue-White

Type (Size): Supergiant

Spectral Class: B5 Ia



Constellation: **Canis Major (The Greater Dog)**

Star Name: **Sirius**

Brightness (Magnitude):
-1.46

Distance: 8.6 light-years

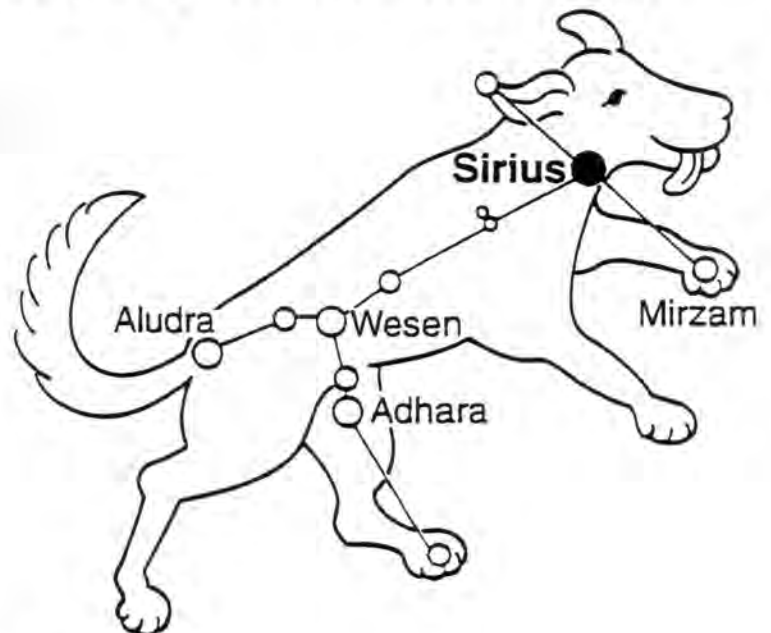
Absolute Magnitude: 1.4

Temperature: 9,940 K

Color: White

Type (Size): Main Sequence (Dwarf)

Spectral Class: A1 V



Constellation: **Draco (The Dragon)**

Star Name: **Eltanin**

Brightness (Magnitude): 2.24

Distance: 148 light-years

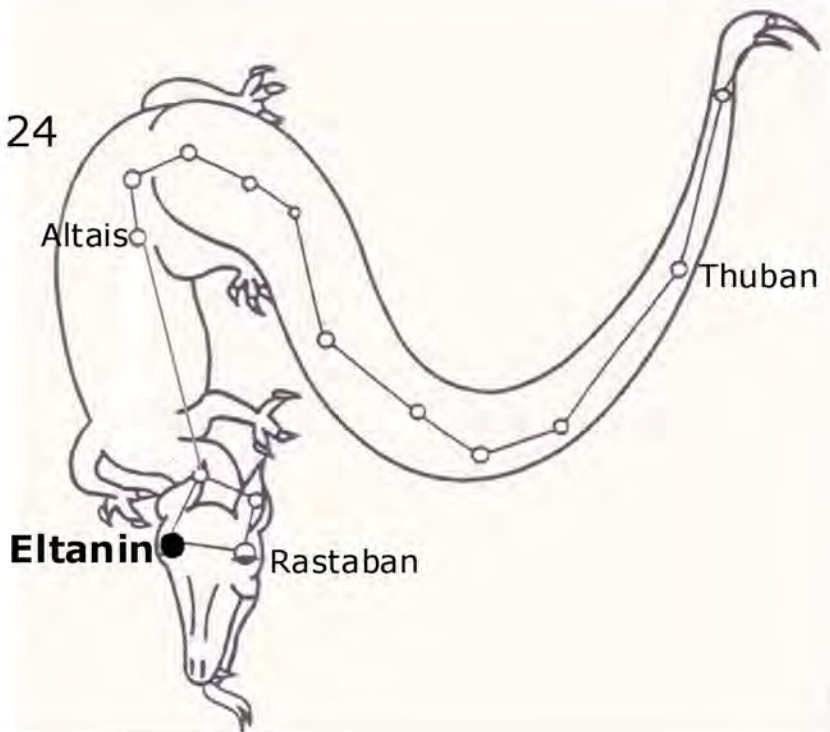
Absolute Magnitude: -1.0

Temperature: 4,000 K

Color: Orange

Type (Size): Giant

Spectral Class: K5 III



Constellation: **Draco (The Dragon)**

Star Name: **Altais**

Brightness (Magnitude): 3.07

Distance: 100 light-years

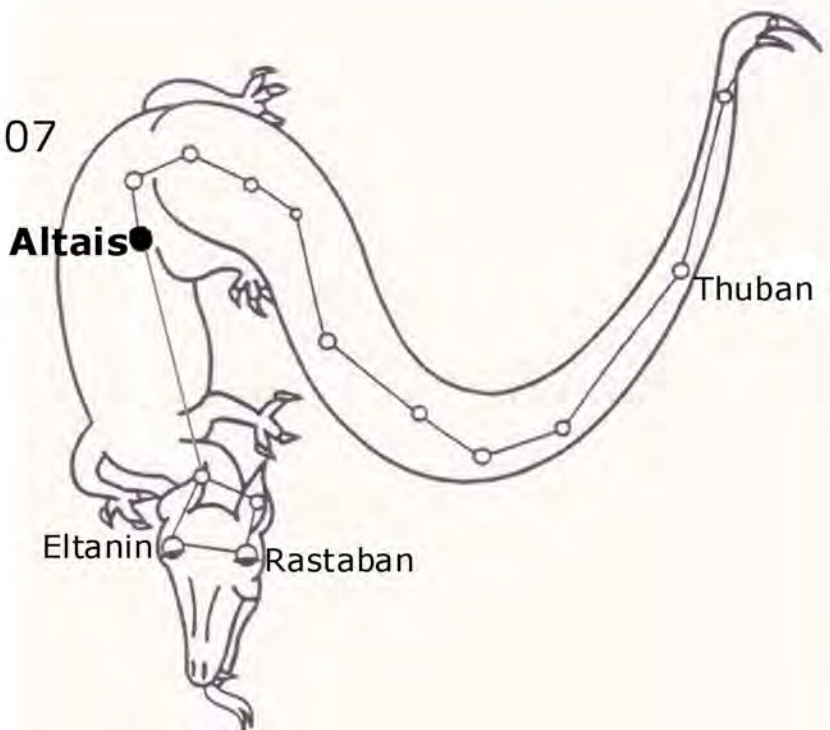
Absolute Magnitude: 1.6

Temperature: 4,800 K

Color: Yellow-Orange

Type (Size): Giant

Spectral Class: G9 III



Constellation: **Leo (The Lion)**

Star Name: **Regulus**

Brightness (Magnitude): 1.35

Distance: 77 light-years

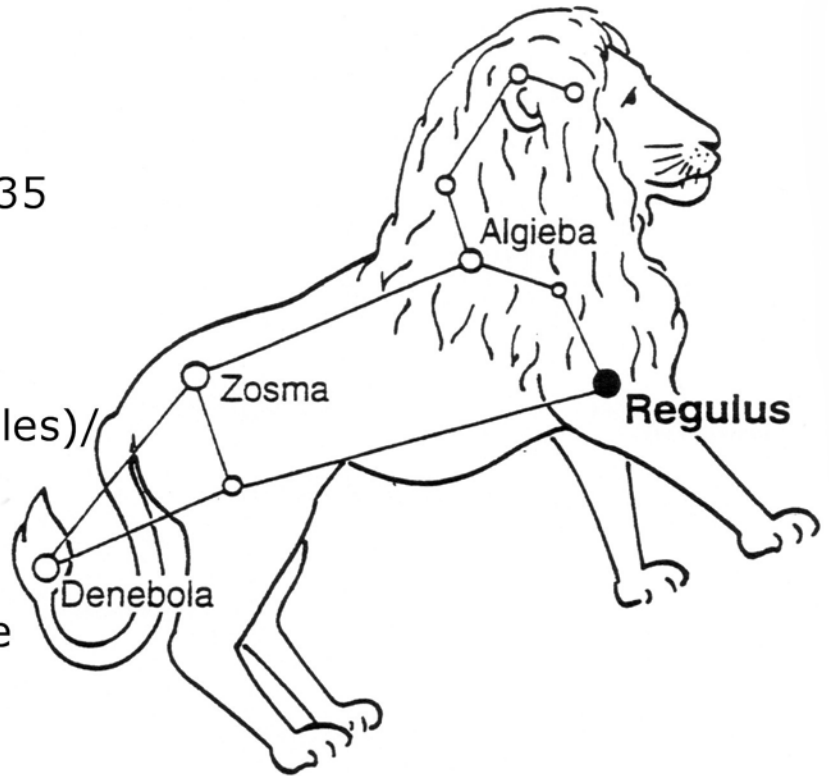
Absolute Magnitude: -0.5

Temperature: 15,400 K (Poles) //
10,300 K (Equator)

Color: Blue-White

Type (Size): Main Sequence
(Dwarf)

Spectral Class: B7 V



Constellation: **Leo (The Lion)**

Star Name: **Denebola**

Brightness (Magnitude): 2.14

Distance: 36 light-years

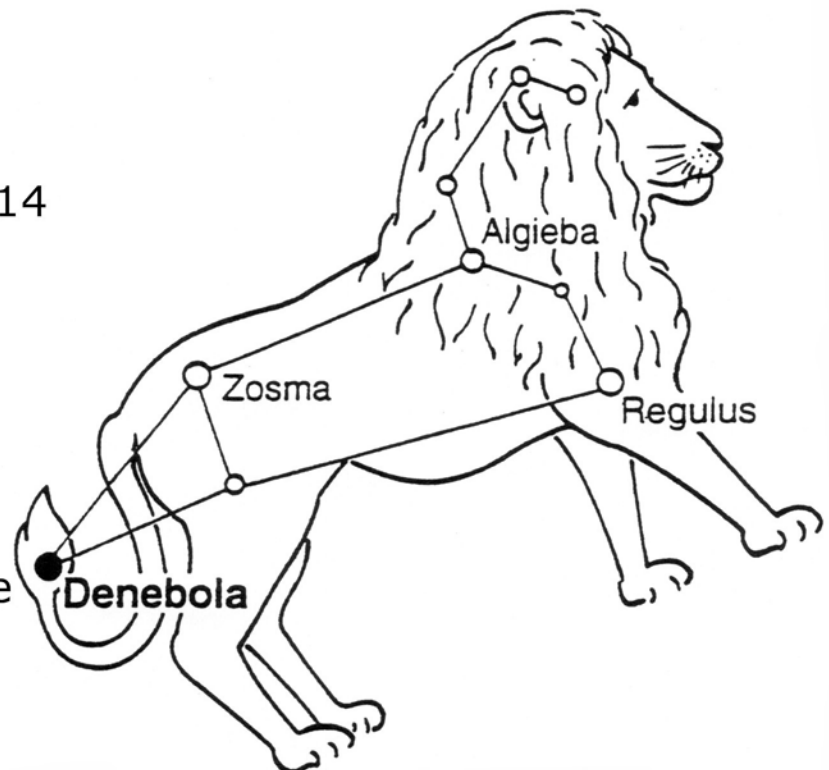
Absolute Magnitude: 1.9

Temperature: 8,500 K

Color: White

Type (Size): Main Sequence
(Dwarf)

Spectral Class: A3 V



Constellation: **Orion (The Hunter)**

Star Name: **Rigel**

Brightness (Magnitude): 0.18 (0.03-0.3)
(Variable Star)

Distance: 780 light-years

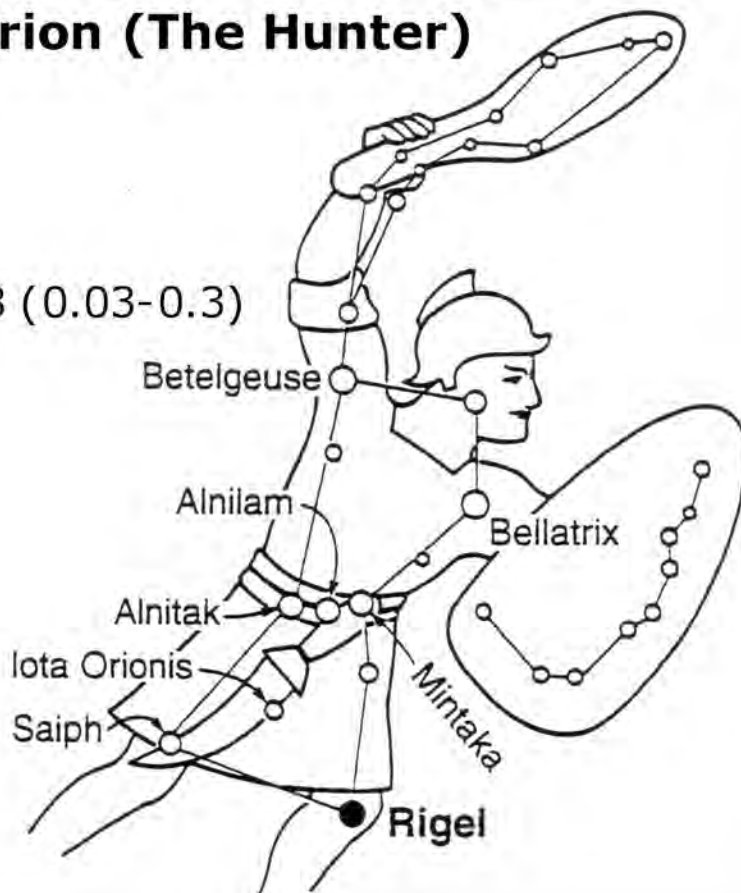
Absolute Magnitude: -6.7

Temperature: 11,000 K

Color: Blue-White

Type (Size): Supergiant

Spectral Class: B8 Iab



Constellation: **Orion (The Hunter)**

Star Name: **Betelgeuse**

Brightness (Magnitude): 0.58 (0.3-1.2)
(Variable Star)

Distance: 640 light-years

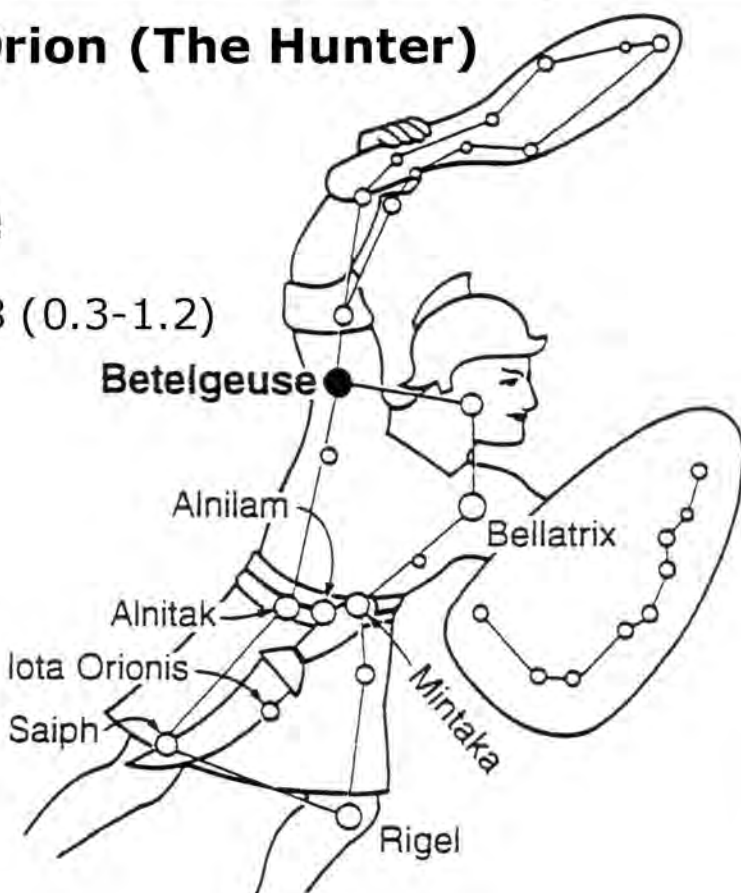
Absolute Magnitude: -5.1

Temperature: 3,500 K

Color: Red

Type (Size): Supergiant

Spectral Class: M2 Iab



Constellation: **Orion (The Hunter)**

Star Name: **Mintaka**

Brightness (Magnitude): 2.23 (3.2/3.3)
(Binary star)

Distance: 900 light-years

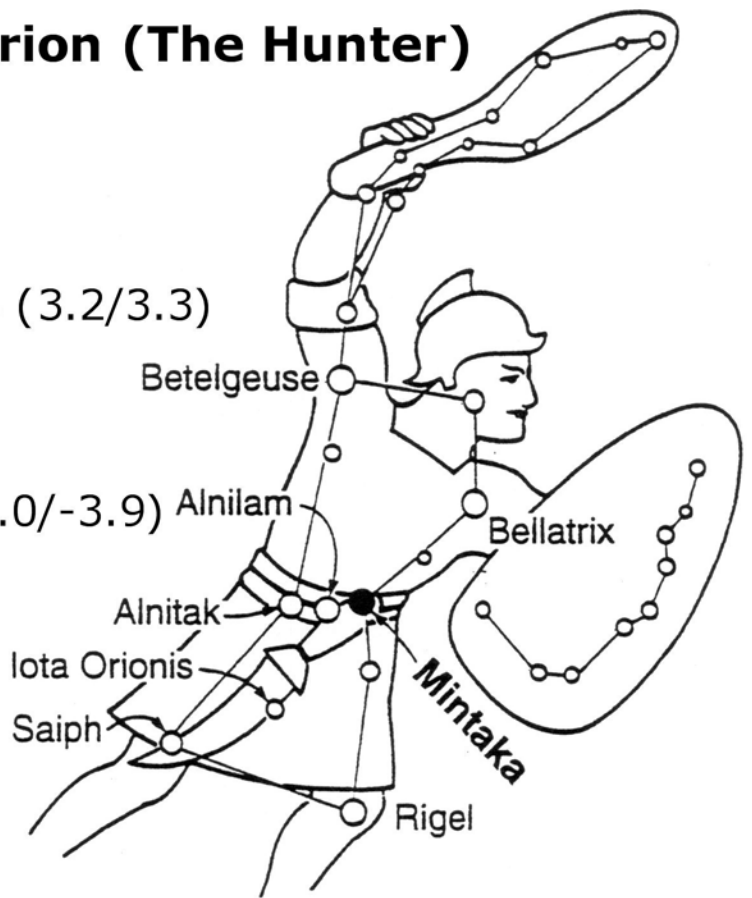
Absolute Magnitude: -5.0 (-4.0/-3.9)

Temperature: 30,000 K

Color: Blue/Blue-White

Type (Size): Bright Giant/
Main Sequence (Dwarf)

Spectral Class: O9.5 II/B2 V



Constellation: **Orion (The Hunter)**

Star Name: **Alnitak**

Brightness (Magnitude): 1.70

Distance: 800 light-years

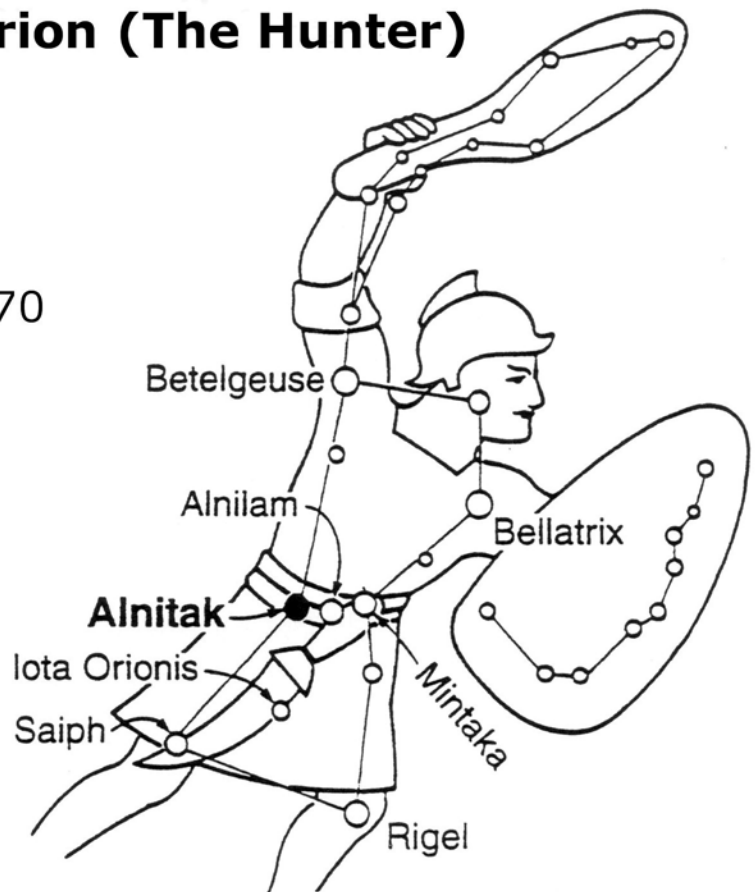
Absolute Magnitude: -5.3

Temperature: 30,000 K

Color: Blue

Type (Size): Supergiant

Spectral Class: O9 Iab



Constellation: **Scorpius (The Scorpion)**

Star Name: **Antares**

Brightness (Magnitude): 1.09
(0.9-1.8) (Variable star)

Distance: 600 light-years

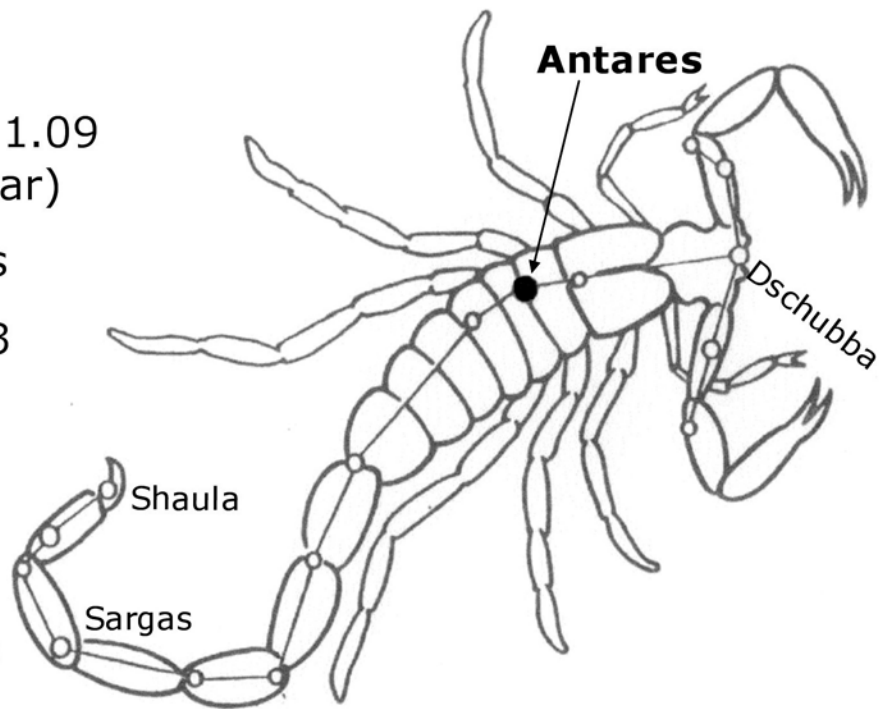
Absolute Magnitude: -5.3

Temperature: 3,500 K

Color: Red

Type (Size): Supergiant

Spectral Class: M1.5 1ab



Constellation: **Scorpius (The Scorpion)**

Star Name: **Shaula**

Brightness (Magnitude): 1.62

Distance: 700 light-years

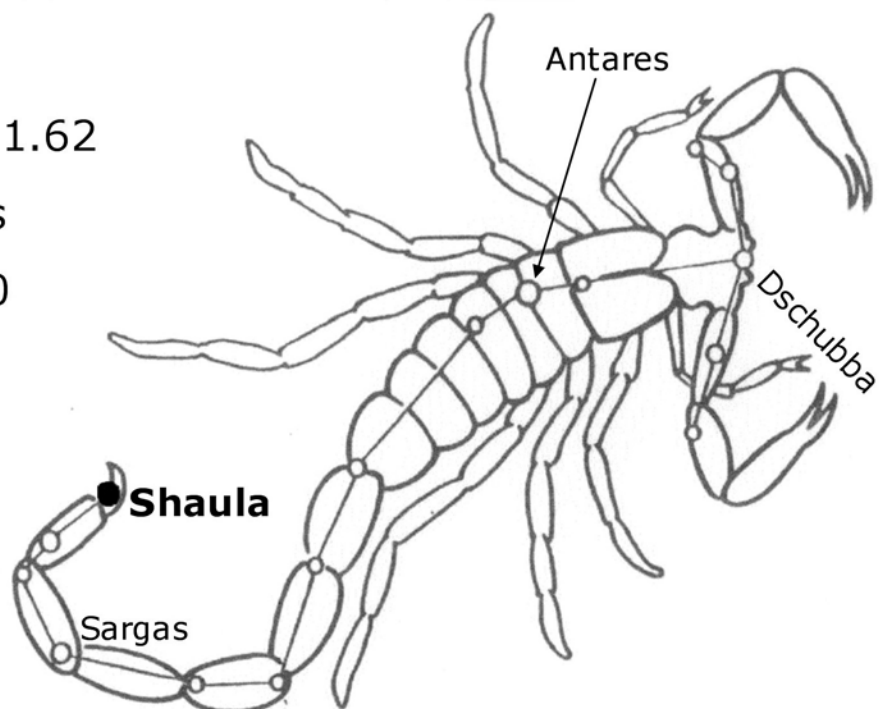
Absolute Magnitude: -5.0

Temperature: 25,000 K

Color: Blue-White

Type (Size): Subgiant

Spectral Class: B2 IV



Constellation: **Taurus (The Bull)**

Star Name: **El Nath**

Brightness (Magnitude): 1.65

Distance: 131 light-years

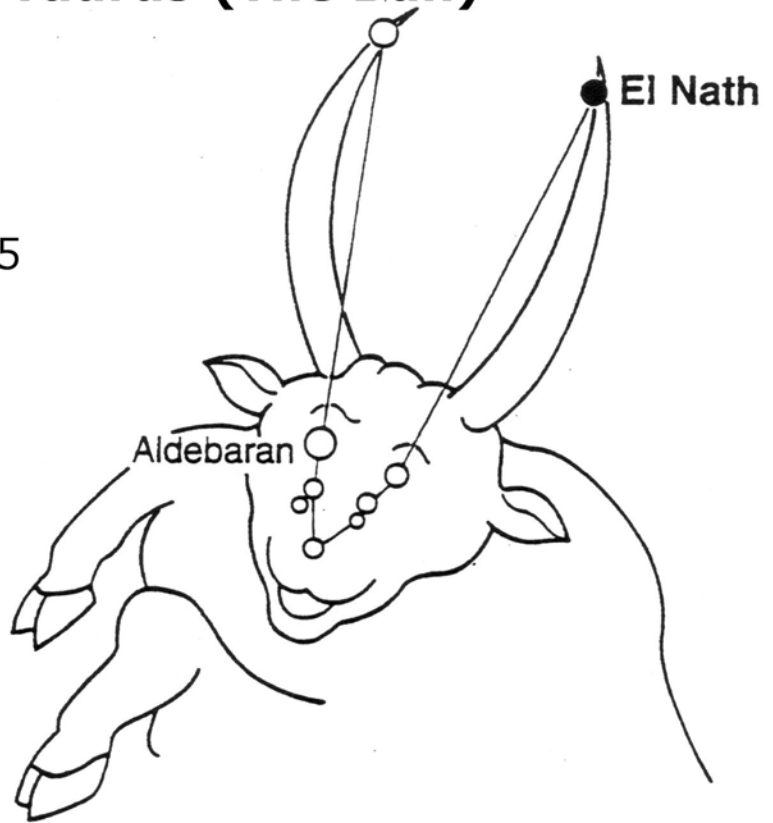
Absolute Magnitude: -1.4

Temperature: 13,600 K

Color: Blue-White

Type (Size): Giant

Spectral Class: B7 III



Constellation: **Taurus (The Bull)**

Star Name: **Aldebaran**

Brightness (Magnitude): 0.85

Distance: 65 light-years

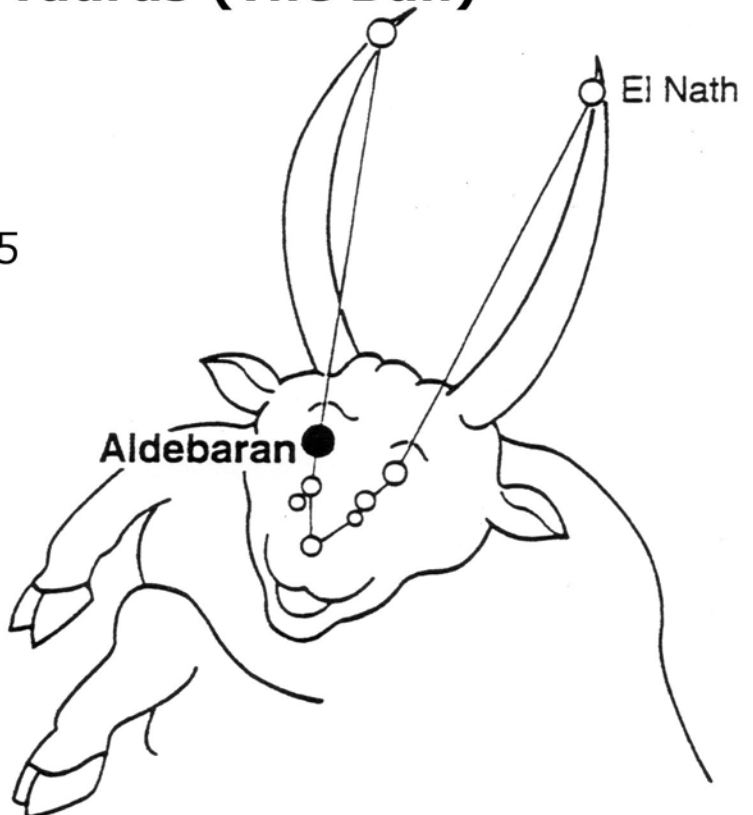
Absolute Magnitude: -0.6

Temperature: 4,100 K

Color: Orange

Type (Size): Giant

Spectral Class: K5 III



Constellation: **Ursa Major (The Great Bear)**

Star Name: **Dubhe**

Brightness (Magnitude): 1.87

Distance: 124 light-years

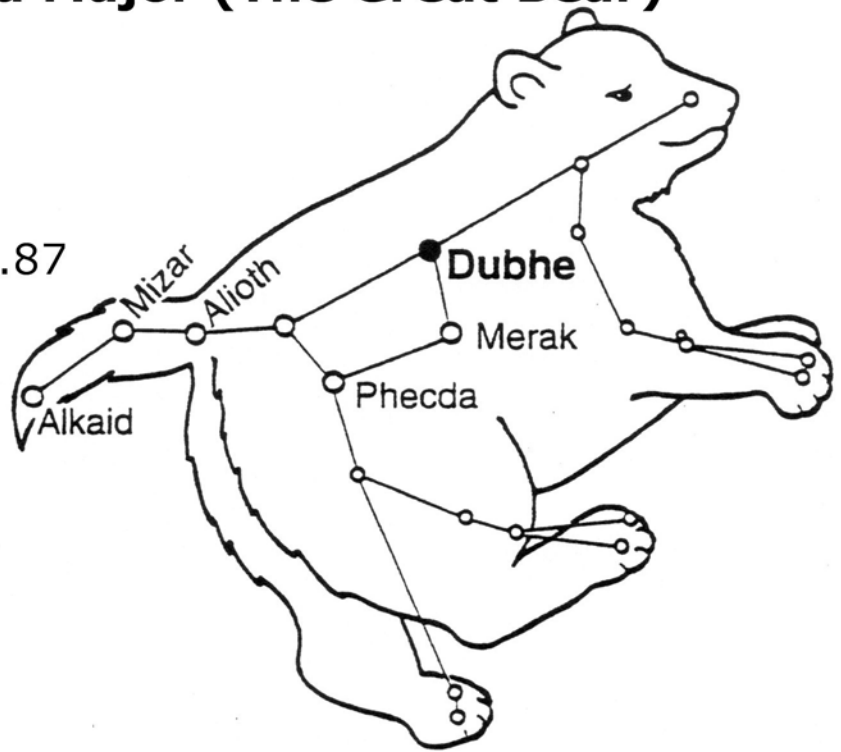
Absolute Magnitude: -1.1

Temperature: 4,500 K

Color: Orange

Type (Size): Giant

Spectral Class: K0 III



Constellation: **Ursa Major (The Great Bear)**

Star Name: **Merak**

Brightness (Magnitude): 2.24

Distance: 79 light-years

Absolute Magnitude: 0.4

Temperature: 9,800 K

Color: White

Type (Size): Main Sequence (Dwarf)

Spectral Class: A1 V

